



GMT MONTHLY MEMBERSHIP PROGRESS REPORT

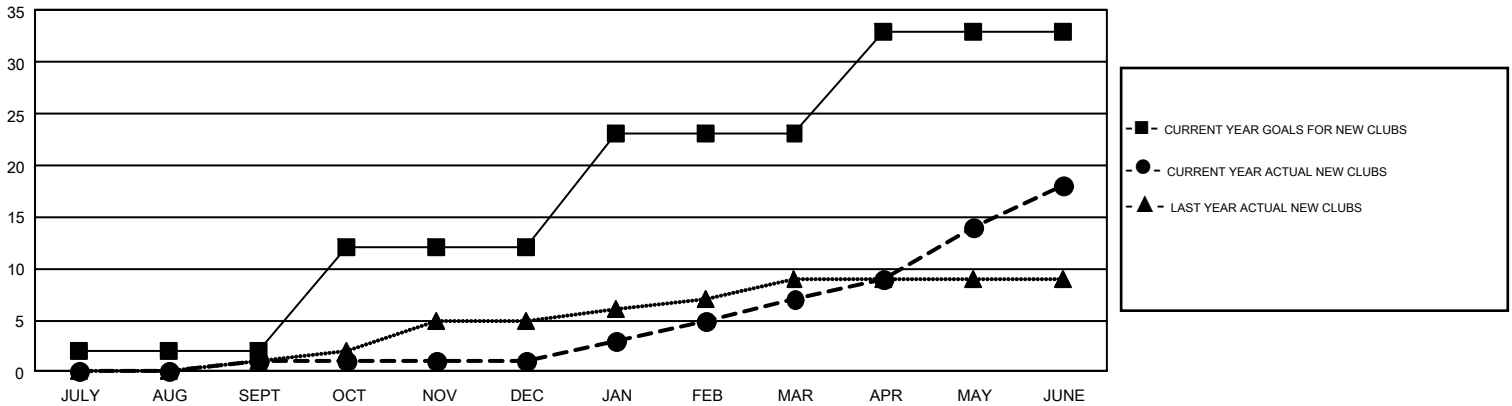
Results as of: 6/30/2017

GMT Constitutional Area 2

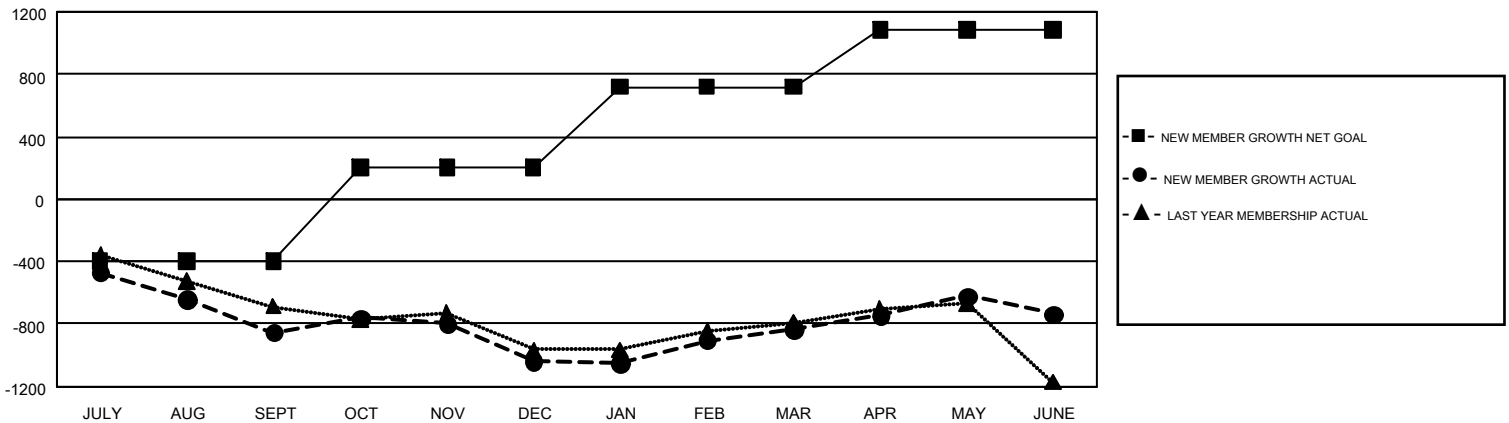
REPORT DOES NOT INCLUDE CLUBS IN UNDISTRICTED AREAS.

Clubs				Members			
RESULTS FOR 2016-2017				RESULTS FOR 2016-2017			
QUARTER	NEW CLUB GOAL	NEW CLUBS	DROPPED CLUBS	QUARTER	NEW MEMBER GROWTH NET GOAL (not reinstated or transfers)	NEW MEMBER GROWTH ACTUAL (not reinstated or transfers)	DROPPED MEMBERS ACTUAL (including transfers)
JULY/AUG/SEPT	2	1	11	JULY/AUG/SEPT	-395	518	1,373
OCT/NOV/DEC	10	0	8	OCT/NOV/DEC	599	1,075	1,258
JAN/FEB/MAR	11	6	4	JAN/FEB/MAR	516	1,153	950
APR/MAY/JUNE	10	11	14	APR/MAY/JUNE	365	1,604	1,504

GOALS AND ACTUAL NEW CLUBS CUMULATIVE



GOALS AND ACTUAL MEMBERS CUMULATIVE



DROPPED CLUBS: 37	1,135 CLUBS OF 1,666 ADDED 1 OR MORE NEW MEMBERS	<u>GENDER DISTRIBUTION</u>
<u>DROPPED MEMBERS</u>	CLICK HERE FOR CUMULATIVE MEMBERSHIP DATA	MALE 27,465 (69.23%)
DECEASED 559		FEMALE 12,208 (30.77%)
CLUB CANCELLED 229		TOTAL FAMILY UNIT MEMBERS 7,235
OTHER 4,295		FAMILY MEMBERS PAYING HALF DUES 3,695
TOTAL 5,083		